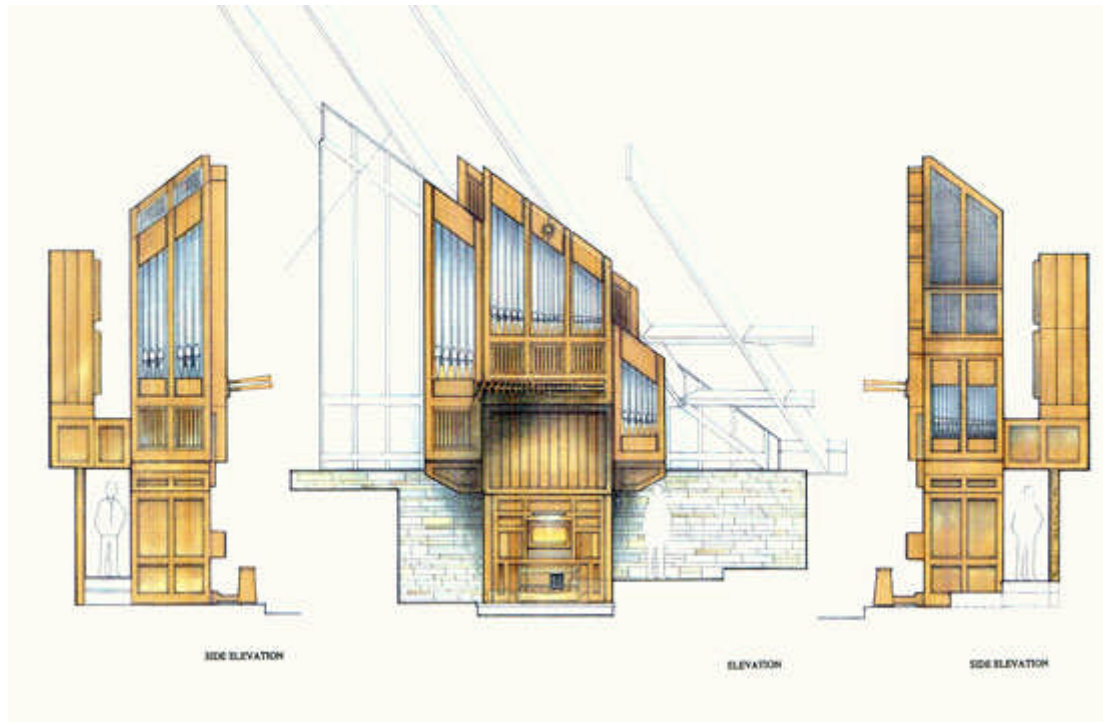


# Casavant Frères



## ***Shoreview, Minnesota — Incarnation Lutheran Church***

Three manuals and pedals, 32 stops, 39 ranks

Attached drawknob keydesk, compass 56/32

Mechanical key action, electric stop action

Opus 3783, 1999

Drawing: Benoît Gendron, Photograph: Tom Erickson

Incarnation Lutheran Church in Shoreview, Minnesota was organized in 1962. With 4000 members and an average attendance of over 1100, the church is one of the larger congregations of the Evangelical Lutheran Church of America. The organ is located at the right side of the nave in this contemporary building. It was important to keep the instrument from projecting too far into the nave so the main case contains just two manual divisions, the Grand Orgue at the top and the Positif Expressif in the *brustwerk* position. The expressive enclosure of the large Récit division is behind the Grand Orgue on a shelf that was built into the structure of the building. The large pedal stops are also housed in this elevated position to the left of the Récit. The Grand Organ and Récit divisions have fully developed choruses and important color combinations including the *cornet décomposé*. The Positif contains a small plenum and the instrument's cylindrical reed stop, the Clarinette 8'. The polished copper pipes of the Trompette-en-chamade project from the center of the casework just below the Montre 8' of the Grand Orgue. This reed stop is available on all three manuals and pedals for registrational flexibility.

In 1999 the instrument was seen and heard in our workshop by several hundred individuals from all over North America attending an open house at Casavant Frères during the Montréal convention of the Organ Historical Society.

| <b>Grand Orgue</b>            |       | <b>Récit</b>                 |    |
|-------------------------------|-------|------------------------------|----|
| Bourdon                       | 16    | Principal                    | 8  |
| Montre                        | 8     | Viole de gambe               | 8  |
| Flûte à cheminée              | 8     | Voix céleste (TC)            | 8  |
| Prestant                      | 4     | Cor de nuit                  | 8  |
| Flûte ouverte                 | 4     | Octave                       | 4  |
| Nazard                        | 2-2/3 | Flûte octavante              | 4  |
| Doublette                     | 2     | Octavin                      | 2  |
| Quarte de nazard              | 2     | Plein Jeu III-V              | 2  |
| Tierce                        | 1-3/5 | Basson                       | 16 |
| Fourniture IV                 | 1-1/3 | Trompette harmonique         | 8  |
| Trompette                     | 8     | Oboe                         | 8  |
| Tremblant                     |       | Tremblant                    |    |
| Bombarde-en-chamade (from 8') | 16    | Trompette-en-chamade (GO)    | 8  |
| Trompette-en-chamade          | 8     |                              |    |
| <b>Positif Expressif</b>      |       | <b>Pédale</b>                |    |
| Bourdon                       | 8     | Basse résultante             | 32 |
| Flûte à fuseau                | 4     | Soubasse                     | 16 |
| Cor de chamois                | 2     | Bourdon (Grand Orgue)        | 16 |
| Larigot                       | 1-1/3 | Octavebasse                  | 8  |
| Clarinete                     | 8     | Flûte bouchée (Grand Orgue)  | 8  |
| Tremblant                     |       | Octave                       | 4  |
| Bombarde-en-chamade (GO)      | 16    | Flûte (Grand Orgue)          | 4  |
| Trompette-en-chamade (GO)     | 8     | Bombarde                     | 16 |
|                               |       | Basson (Récit)               | 16 |
|                               |       | Baryton (Récit)              | 8  |
|                               |       | Trompette-en-chamade (GO)    | 8  |
|                               |       | Trompette harmonique (Récit) | 8  |
|                               |       | Soprano (Récit)              | 4  |
|                               |       | Trompette-en-chamade (GO)    | 4  |
| <b>Couplers</b>               |       |                              |    |
| Grand Orgue / Pédale          |       |                              |    |
| Récit / Pédale                |       |                              |    |
| Positif / Pédale              |       |                              |    |
| Récit / Grand Orgue           |       |                              |    |
| Positif / Grand Orgue         |       |                              |    |
| Récit / Positif               |       |                              |    |